

# StreamNet Regional Library

Natural Resources Information for the Pacific Northwest

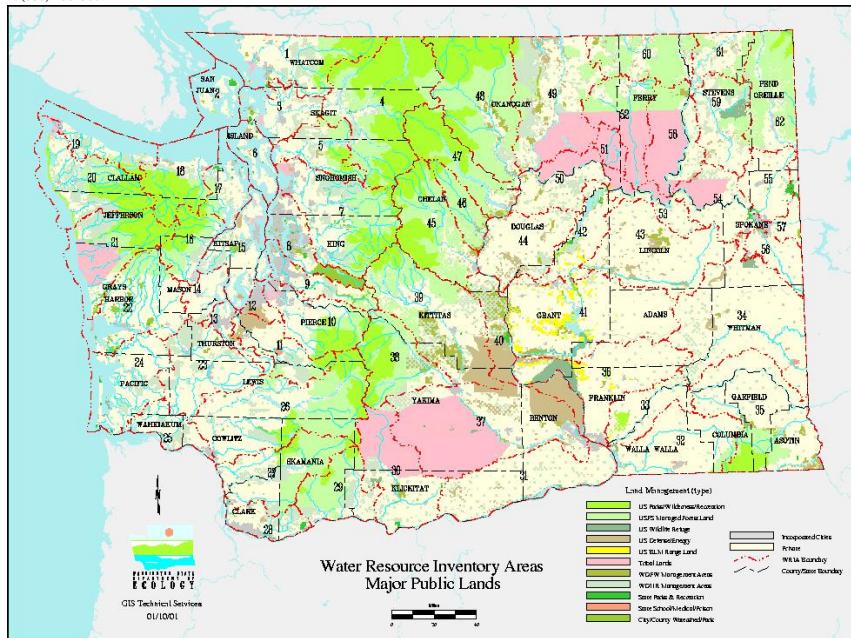
HOME ABOUT US CALENDAR SERVICES **DIGITAL COLLECTIONS** NEWS & REVIEWS



## Washington Stream Catalog

A catalog of Washington streams and salmon utilization. 1975. Seattle, WA : Washington Dept. of Fisheries. 4 vols.

Links are to PDF (summary pages and/or river mile index), as published. If you are unable to download these documents, please contact the [StreamNet Library](#) at (503) 238-0667.



<a href="#">WRIA 01 : Nooksack Basin</a> <a href="#">RMI 01 : Nooksack Basin</a>	<a href="#">WRIA 02 : San Juan Islands</a> <a href="#">RMI 02 : San Juan Islands</a>	<a href="#">WRIA 03, 04 : Skagit &amp; Samish Basins</a> <a href="#">RMI 03, 04 : Skagit &amp; Samish Basins</a>	<a href="#">WRIA 05 : Stillaguamish River Basin</a> <a href="#">WRIA 05 : Stillaguamish River Basin</a>	<a href="#">WRIA 06 : Island County</a> <a href="#">RMI 06 : Island County</a>	<a href="#">WRIA 07 : Snohomish River Watershed</a> <a href="#">RMI 07 : Snohomish River Watershed</a>
<a href="#">WRIA 08 : Cedar &amp; Sammamish River Basins</a> <a href="#">RMI 08 : Cedar &amp; Sammamish River Basins</a> <a href="#">Lake Shore Index 08 : Cedar &amp; Sammamish River Basins</a>	<a href="#">WRIA 09 : Green/Duwamish &amp; Central Puget Sound Watersheds</a> <a href="#">RMI 09 : Green/Duwamish &amp; Central Puget Sound Watersheds</a>	<a href="#">WRIA 10 : Puyallup River Basin</a> <a href="#">RMI 10 : Puyallup River Basin</a>	<a href="#">WRIA 11 : Nisqually River Basin</a> <a href="#">RMI 11 : Nisqually River Basin</a>	<a href="#">WRIA 12 : Chambers – Clover Creek Watershed</a> <a href="#">RMI 12 : Chambers – Clover Creek Watershed</a>	<a href="#">WRIA 13 : Deschutes River</a> <a href="#">RMI 13 : Deschutes River</a>
<a href="#">WRIA 14 : Kennedy-Goldsborough Basins</a> <a href="#">RMI 14 : Kennedy-Goldsborough Basins</a>	<a href="#">WRIA 15 : Kitsap Basin</a> <a href="#">RMI 15 : Kitsap Basin</a>	<a href="#">WRIA 16 : Hood Canal Basin</a> <a href="#">RMI 16 : Hood Canal Basin</a>	<a href="#">WRIA 17 : Quilcene Basin</a> <a href="#">RMI 17 : Quilcene Basin</a>	<a href="#">WRIA 18 : Elwha-Dungeness Basins</a> <a href="#">RMI 18 : Elwha-Dungeness Basins</a>	<a href="#">WRIA 19 : Lyre-Hoko Basins</a> <a href="#">RMI 19 : Lyre-Hoko Basins</a>
<a href="#">WRIA 20 : Soleduck-Hoh Basins</a> <a href="#">RMI 20 : Soleduck-Hoh Basins</a>	<a href="#">WRIA 21 : Queets-Quinault Basin</a> <a href="#">RMI 21 : Queets-Quinault Basin</a>	<a href="#">WRIA 22 &amp; 23 : Chehalis Basin</a> <a href="#">RMI 22 &amp; 23 - Chehalis Basin</a>	<a href="#">WRIA 24 : Willapa Basin</a> <a href="#">RMI 24 : Willapa Basin</a>	<a href="#">WRIA 25 : Columbia River (Mouth to Cowlitz River)</a> <a href="#">RMI 25 : Columbia River (Mouth to Cowlitz River)</a>	<a href="#">WRIA 26 : Cowlitz River</a> <a href="#">RMI 26 : Cowlitz River</a>
<a href="#">WRIA 27 : Kalama &amp; Lewis Rivers</a>	<a href="#">WRIA 28 : Washougal Watershed</a>	<a href="#">WRIA 29 : Columbia River (RM 149.95-178)</a>	<a href="#">WRIA 30 : Klickitat River Basin</a>	<a href="#">WRIA 31</a>	<a href="#">WRIA 32 : Walla Walla-Touche Rivers</a>
<a href="#">WRIA 33 : Snake River</a>	<a href="#">WRIA 34 : Palouse Basin</a>	<a href="#">WRIA 35 : Tucannon River &amp; Snake River (to Idaho border)</a>	<a href="#">WRIA 36 : Columbia River (Left Bank)</a>	<a href="#">WRIA 37</a>	<a href="#">WRIA 38</a>
<a href="#">WRIA 39</a>	<a href="#">WRIA 40</a>	<a href="#">WRIA 41 : Lower Crab Creek</a>	<a href="#">WRIA 42 : Crab Creek</a>	<a href="#">WRIA 43 : Crab Creek Drainage</a>	<a href="#">WRIA 44 : Moses Coulee (Columbia River RM 447-Chelan Falls)</a>
<a href="#">WRIA 45</a>	<a href="#">WRIA 46</a>	<a href="#">WRIA 47</a>	<a href="#">WRIA 48 : Methow Watershed</a>	<a href="#">WRIA 49 : Okanagan-Similkameen Rivers</a>	<a href="#">WRIA 50 : Columbia River (RM 503-Coulee Dam)</a>
<a href="#">WRIA 51 : Nespelem River</a>	<a href="#">WRIA 52</a>	<a href="#">WRIA 53 : Columbia River (Roosevelt Lake)</a>	<a href="#">WRIA 54 : Spokane River Basin</a>	<a href="#">WRIA 55 : Little Spokane River</a>	<a href="#">WRIA 56 : Hangman Creek</a>
<a href="#">WRIA 57 : Spokane River</a>	<a href="#">WRIA 58</a>	<a href="#">WRIA 59</a>	<a href="#">WRIA 60</a>	<a href="#">WRIA 61 : Columbia River (Roosevelt Lake-Canadian Border)</a>	<a href="#">WRIA 62 : Pend Oreille Basin</a>